



Tulane



TULANE UNIVERSITY  
OFF-CAMPUS MARDI GRAS PLAN

Tulane

# ON CAMPUS PLANS

- Guest Registration in the Residence Halls.
- Educational Programming to Students regarding safe Mardi Gras Behavior.
- Additional Lighting and Security on campus.
- Shuttles to parade route from campus.

New Orleans  
**MARDI GRAS**

Mardi Gras is an exciting time, filled with food, fun, friends, and tradition. Before heading out to the parades, make a plan with your friends for going out, staying, and coming home **TOGETHER**.



**Always stay with your friends.**

The population of New Orleans triples during Mardi Gras. This is not the time to go out solo.

**Pick a meeting time and place**

in case your group gets separated.

**Set your limits.**

Decide ahead of time what you want to experience and what you're comfortable with. Then communicate these with your friends before you go out.

**Respect each others' decisions.**

Everyone's preferred Mardi Gras experience is different. Your friends may not want to do the same things as you do.

**Be alert and keep in touch with your friends.**

Check in throughout the day to keep each other safe.

**Write down friends' cell phone numbers**

in case your phone battery dies, you lose your phone, or you lose cell reception.



**SHOULD I STEP IN?**

If you feel like you should step in to prevent or deescalate violence, intervene in a way that fits the situation and your comfort level. Use any of the **three Ds**:


- **Directly do something.**
- **Delegate to others for help.**
- **Distract to diffuse.**


Remember, stepping in can make all the difference, but it should never put your own safety at risk. Learn more at [allin.tulane.edu/bystander-intervention](http://allin.tulane.edu/bystander-intervention).

# THINGS TO KNOW BEFORE YOU GO


## PARADE ETIQUETTE


Don't stop conducting yourself like a respectful Tulanian just because it's Mardi Gras. Here's how to enjoy the season politely.


 **Be respectful of other people's claimed territory.** They may share their space if you're nice.

 **Be good to our neighbors.** Don't urinate outside of homes and businesses. Stay off private property.


 **Do not throw anything** at the float or the riders.

 **Never cross the street through a marching krewe or band.** Only cross after a float passes.

 Unless the throw is a one-of-a-kind, **leave it on the ground** if you didn't catch it.

 **Don't take throws away from children.** Instead, give the throws to them!

 **Back up to make space** for the marching krewes, bands, dance troupes, and walking groups.

 No matter where you go, don't forget to **adhere to the Tulane Student Code of Conduct**, which is always in effect, even during Mardi Gras.

## MARDI GRAS CHECKLIST:

- Leave valuables in my room.
- Fully charge my phone.
- Bring ID, copy of insurance card, and cash.
- Put important numbers in my phone:
  - TUPD/Tulane EMS: 504-865-5911
  - Tulane Shuttles: 504-314-7433
  - Attorney Carolyn Cooper (Tulane University Legal Assistance Program): 504-534-5406
  - The Line (24/7 mental health support): 504-264-6074
- Make a plan to get to and from the parade route. (Walking or public transit are great options.)
- Eat a protein-rich, filling meal before going out.
- Pack a bag or fanny pack with:
  - Water bottle
  - Toilet paper
  - Sunscreen
  - Snacks
  - Hand sanitizer
  - Tissues
- Wear comfortable shoes.
- Check the weather. Layer clothes as needed.
- Designate a meeting spot in case my friends get separated.





# LOOK OUT FOR YOUR KREWE

**Always stay with your friends.**

The city's population triples during Mardi Gras. This is not the time to go out solo.

**Pick a meeting time and place** in case your group gets separated.

**Set your limits.** Communicate to your friends what you want to experience and what you're comfortable with ahead of time.

**Respect each others' decisions.** Everyone's preferred Mardi Gras experience is different. Your friends may not want to do the same things as you do.

**Be alert and keep in touch with your friends.** Check in with your friends throughout the day.

**Write down friends' cell phone numbers** in case your phone battery dies, you lose your phone, or you lose reception.

## WATCH FOR SIGNS OF INCAPACITATION

Take care of your friends and watch for signs of **incapacitation** (a state beyond intoxication):

- **Disorientation**
- **Vomiting**
- **Incoherent speech**
- **Loss of consciousness**

*A person who is incapacitated may need extra care and support, and they cannot consent to any sexual activity.* If a friend is showing concerning signs of incapacitation, do not hesitate to call for help.

For an on-campus emergency, call TUPD/Tulane EMS at 504-865-5911.

For an off-campus emergency, call 911.



# FRATERNITY & SORORITY PROGRAMS

- January 17th | Social Event Training
- January 18th | Mardi Gras Meeting
  - Including Reminders and Obligations
  - Included the Dean of Students Office and TUPD
  - Trash Pickup
  - Alternatives

# COMMUNICATION AND CONDUCT

- All students receive a communication (e-mail) about Mardi Gras with information about behavioral expectations and safety.
- Specific student groups (on-campus residents, grad and professional students, student leaders in Fraternity & Sorority programs) receive in-person education
- We do tabling leading up to Mardi Gras to again reiterate safety and behavioral expectations to all students



# COMMUNICATION & CONDUCT

- The Code of Student Conduct applies to behavior on and off-campus.
- If you witness problematic behavior and are in the uptown area, the best course of action is to call TUPD and fill out a Concerns report: <https://tulane.edu/concerns>
- If you witness problematic behavior along the parade route, provide as much identifying information as possible (including pictures if possible) and complete the concerns report.

# TULANE POLICE DEPARTMENT

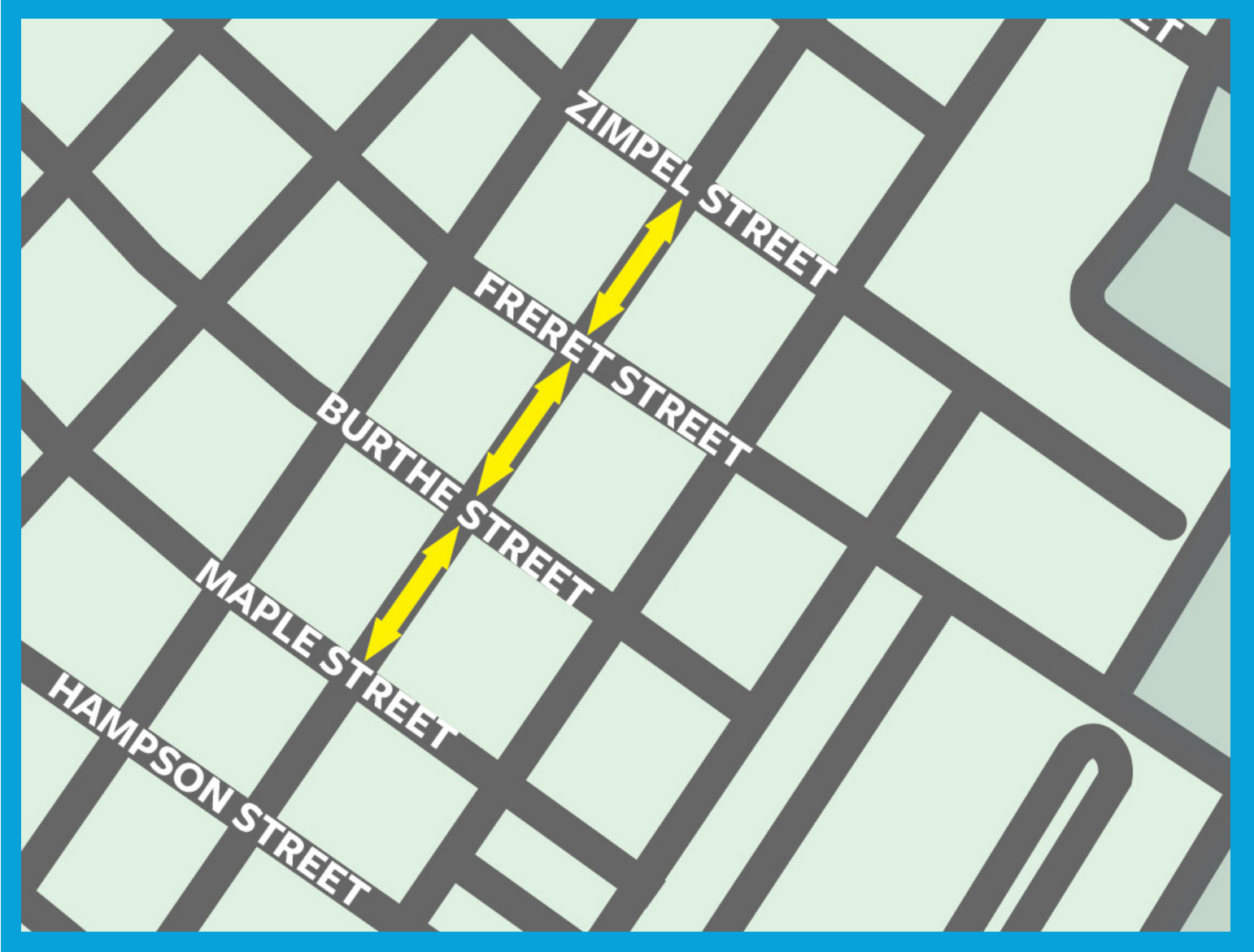
- TUPD will be deployed throughout campus and the neighborhood.
- Additional patrols will be added to help during the weekend through Mardi Gras Day.

# TULANE POLICE DEPARTMENT

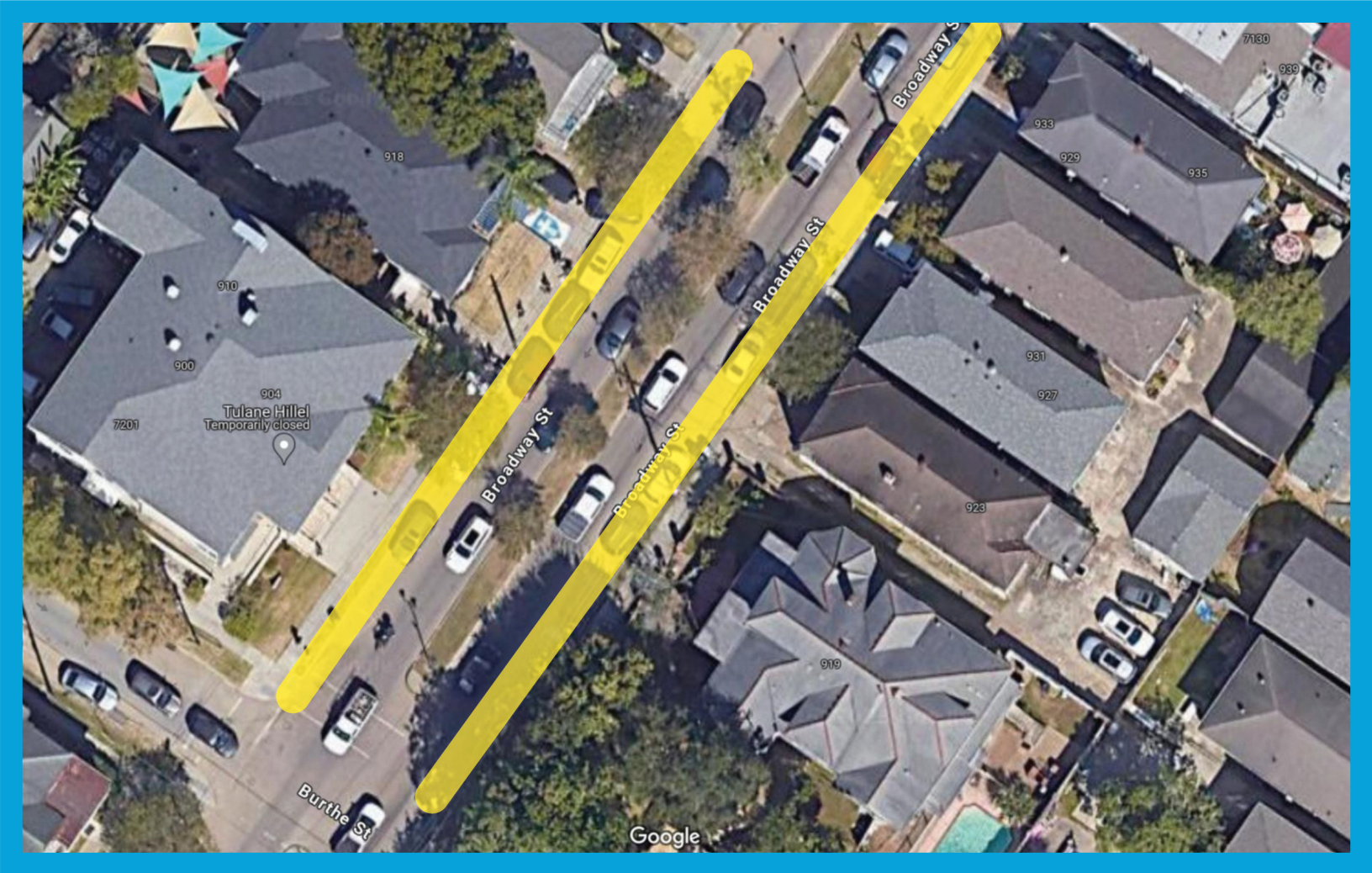
Broadway St. Parking Restriction Pilot Program,

- Parking Restricted along Broadway from Zimpel St. to Maple St. On Saturday, Feb. 10.
- We will place barricades in the parking lanes, while allowing traffic to continue to flow.
- Driveways and cross streets such as Burthe and Freret will be unobstructed.
- Anyone parking at 200 Broadway due to the barricades will need to email [parking@tulane.edu](mailto:parking@tulane.edu) and include their vehicle make/model/license plate.

Barricades Positioned Along Broadway from Maple Street to Zimpel Street



# Barricades Positioned Along Broadway from Maple Street to Zimpel Street



Barricades would be positioned between the travel lane and sidewalk to allow for the free flow of traffic, while providing additional space for pedestrians. The street would need to be signed "NO PARKING" on February 10, 2024.

# TRASH COLLECTION SCHEDULE

Broadway St.

- Willow to St Charles

Thursday	02/08
Friday	02/09
Saturday	02/10
Sunday	02/11
Monday	02/12
Tuesday	02/13
Wednesday	02/14

We will patrol Claiborne to Willow and pick up that area as needed, all fraternities and sororities will be monitored daily by our grounds crew.

TULANE UNIVERSITY  
MARDI GRAS  
TRASH SWEEPS



# HOW TO CONTACT US

- Office of Government & Community Relations
  - Chris Pourciau: [cpourciau@tulane.edu](mailto:cpourciau@tulane.edu) / (504) 450-5028
  - Lauren Jardell: [ljardell@tulane.edu](mailto:ljardell@tulane.edu) / (504) 881-5307
- Concerns Report: <https://srss.tulane.edu/report-concern>
- TUPD
  - Non-Emergency: (504) 865-5381
  - Emergency: (504) 865-5911





Tulane